

Smart PV Optimizer



Higher Revenue

- Max. efficiency 99.6%, weighted efficiency 99.0%
- Allows more panels on each roof to achieve higher system yields

Simple & Easy

- Supports installation in shade prone areas and in different directions
- Quick frame mount at warehouse, less rooftop installation time
- Supports remote module-level monitoring

Safe & Reliable

- IP68, support outdoor application
- Communication through DC Power Line Communication
- Single module shutdown capability to secure people and assets safety



| Technical Specification | SUN2000P-375W |
|--------------------------------------|--|
| | Input |
| Rated input power | 375 W |
| Absolute maximum input voltage | 80 V |
| MPPT operating voltage range | 10-80 V |
| Max. input current | 12 A |
| Max. efficiency | 99.6 % |
| Weighted efficiency | 99 % |
| Overvoltage category | II |
| | Output |
| Max. output voltage | 80 V |
| Max. output current | 15 A |
| Output bypass | Yes |
| | Standard Compliance |
| Safety | IEC62109-1 (class II safety) |
| RoHS | Yes |
| | General Specification |
| Maximum allowed system voltage | 1000 V |
| Communication | PLC |
| Dimensions (W x L x H) | 125*85*25.5 mm |
| Weight (including cables) | 0.7 kg |
| Installation Part | PV module frame / Aluminum extrusion profile Optional |
| Input connector | MC4 |
| Output connector | MC4 |
| Output wire length | 47 in / 1.2 m |
| Operating temperature/humidity range | -40 to 85 °C / 0-100 % |
| Protection rating | IP68 |
| | PV System Design Using A SUN2000L Inverter |
| Minimum String Length | According to inverter design rules & PV module datasheet |
| Maximum String Length | |
| Maximum Power per String | |

The text and figures reflect the current technical state at the time of printing. Subject to technical changes. Errors and omissions excepted. Huawei assumes no liability for mistakes or printing errors. For more information, please visit solar.huawei.com. Version No.:03-(20171027)

Smart PV Safety Box (Preliminary Version)



Simple & Easy

- Communicate with optimizers through Power Line communication
- Support module-level real time monitoring & management

Safe & Reliable

- Single module shutdown capability to secure people and assets safety
- IP65, support outdoor application

| Technical Specification | SmartPSB2000L |
|-----------------------------------|-------------------|
| DC Input | |
| Maximum input voltage | 1100 V |
| Number of inputs | 2 |
| Maximum input current per input | 15 A |
| DC Output | |
| Maximum output voltage | 1100 V |
| Number of outputs | 2 |
| Maximum output current per output | 15 A |
| Features | |
| Module-level remote management | Yes |
| Onsite master module shutdown | Yes |
| Remote auto module shutdown | Yes |
| General Specification | |
| Dimensions (H x W x D) | 148 x 148 x 38 mm |
| Weight | 3 kg |
| Display | LED |
| Communication | PLC, RS485 |
| Input type | HH4 |
| Operating temperature range | -30 to 60 °C |
| Protection rating | IP65 |

The text and figures reflect the current technical state at the time of printing. Subject to technical changes. Errors and omissions excepted. Huawei assumes no liability for mistakes or printing errors. For more information, please visit solar.huawei.com. Version No.:02-(20171026)

NetEco 1000S Inverter Management System



Smart

- Easy data accesses on mobile devices
- Proactive reports of yields and alarms

Simple

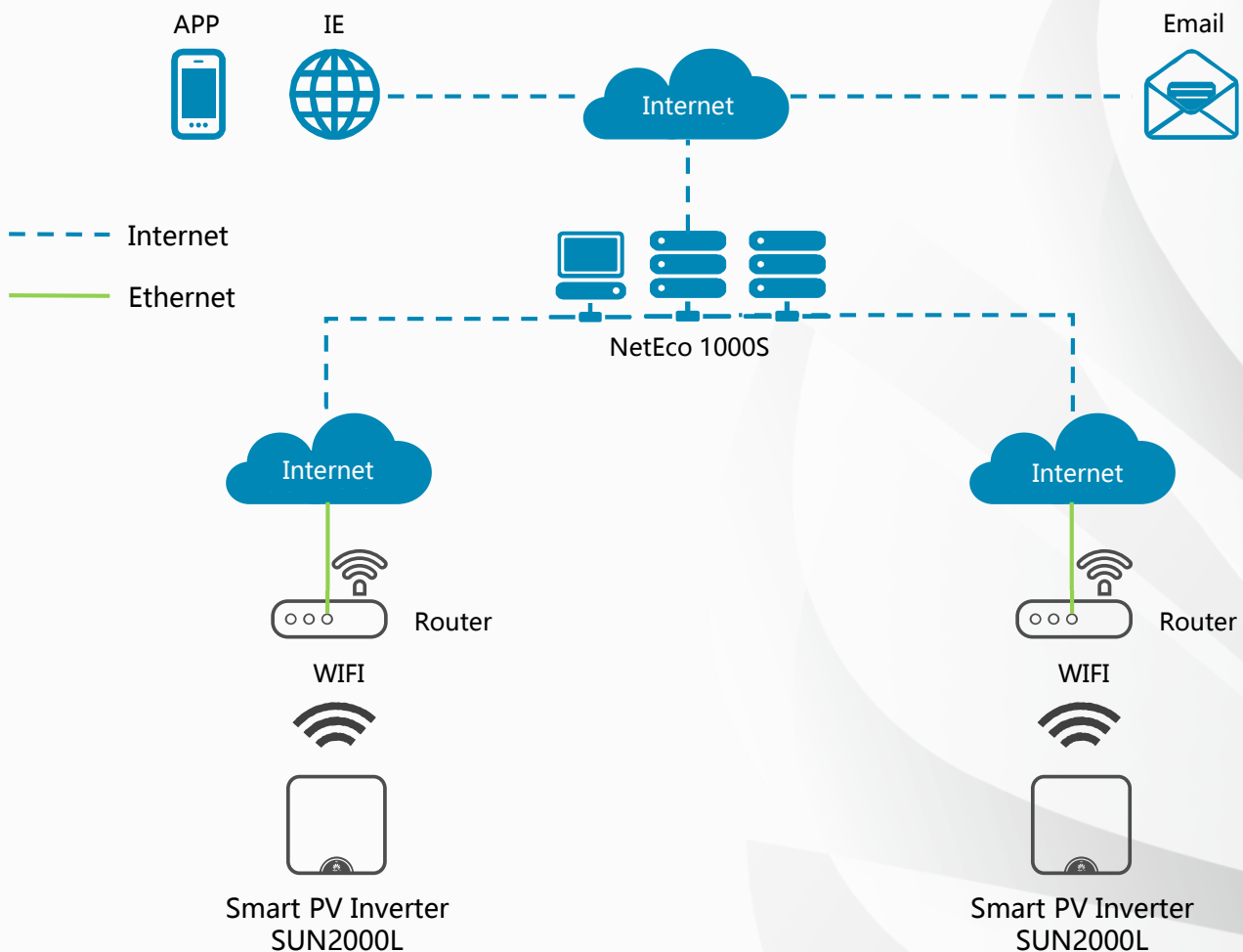
- One-click installation and register
- Fault alarms via E-mail

Stable

- Centralized management
- Up to 25 years data storage



Network Structure



NetEco 1000S Inverter Management System



NetEco 1000S Function List

| Num. | Function | Description |
|------|--|--|
| 1 | APP | <ul style="list-style-type: none">➤ Supports Android 4.0 and iOS 5.0 or above➤ Graphical display of the alarm, power and other information |
| 2 | Alarm Management | <ul style="list-style-type: none">➤ Collect, store and browse history alarm, current alarm, unrecovered alarm and recovered alarm |
| 3 | Real-time Monitoring | <ul style="list-style-type: none">➤ Browse detailed real-time device Information, include the alarm, KPI and device state➤ Support remote control |
| 4 | KPI Management | <ul style="list-style-type: none">➤ Browse the KPI➤ Analyze the power, and inverter data compare |
| 5 | Device Management | <ul style="list-style-type: none">➤ Device parameter setting➤ Device software update, and support remote update the software |
| 6 | User rights Management | <ul style="list-style-type: none">➤ According to the user role, provide different permissions |
| 7 | Remote Notifications of Alarms and Reports | <ul style="list-style-type: none">➤ Through configuration on the server sending rules, the alarms and reports could be sent to user's email automatically |

